

LUNDBERG EDGE-TRIM GRANULATING SYSTEMS FOR PAPER/ADHESIVE PAPER AND PLASTIC



Granulator mounted on take-up for extruding line

Lundberg
H. Lundberg Maskinfabrik Aps



Cyclone systems for collecting two different types of plastic film
Each system collects waste from four inspection machines



Main extraction from granulating plant connected to automatic label printing machines
The granulated paper, adhesive coated waste is collected in a compactor.



The COMBI-model comes in two sizes. The machines are mobile units with built-in granulators, exhaust systems as well as an electric control system. For cutting of adhesive paper, the machines are supplied with a special system preventing adhesive paper from sticking to internal components. The machines can be supplied with additional equipment for the cutting/destruction of reject rolls of labels.

GR 80 COMBI / GR 140 COMBI.



GR 80 and GR 140 STANDARD are machines typically used for granulation of edge-trim from machines with a separate exhaust system. Like the other models of our range, these machines can also be equipped for cutting of adhesive paper.

GR 80 MS STANDARD / GR 140 MS STANDARD.



LUNDBERG granulators type U have been developed for continuous cutting of plastic and paper, e.g. edge-trimming of roll cutters and printing machines, etc. The machines can also be supplied with special equipment for cutting of adhesive-paper. The granulators are designed so that they can be built directly into both new and existing pipe systems by the use of quick-connectors.

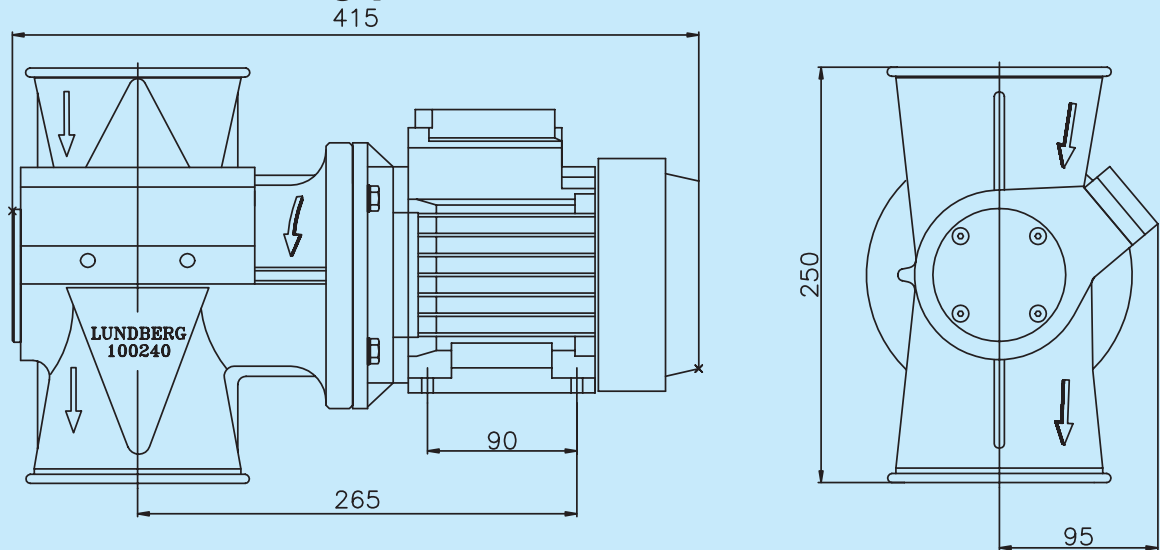
GR 80 U / GR 140 U / GR 250 U.



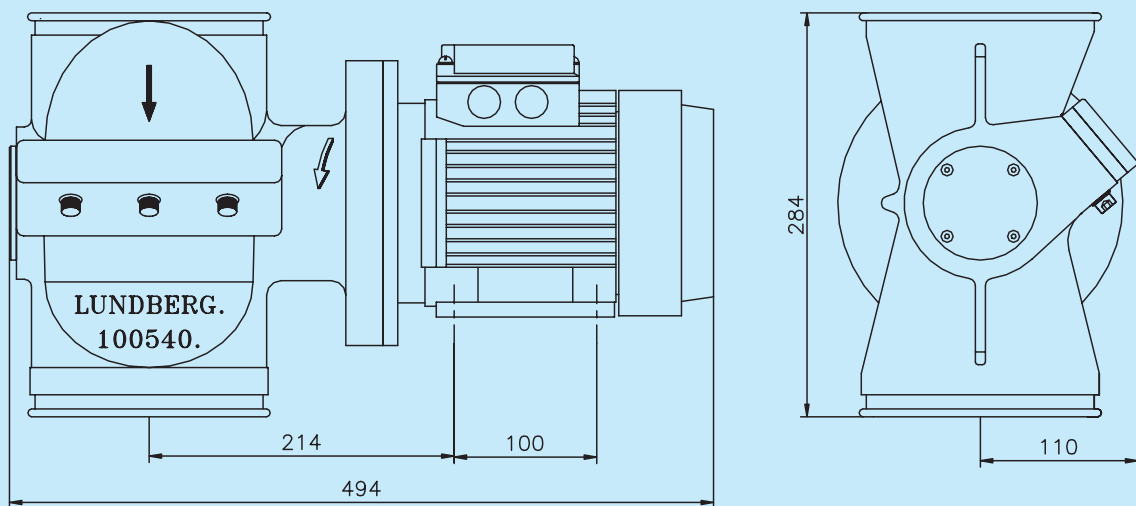
LUNDBERG MASKINFABRIK supplies cyclone systems for use with central exhaust/granulator systems. The advantage of using these systems is that it will not be necessary to stop production when the bag has to be changed as the systems change over automatically from full to empty bag. The systems emit an acoustic or visual signal when a bag is full.

DOUBLE CYCLONE.

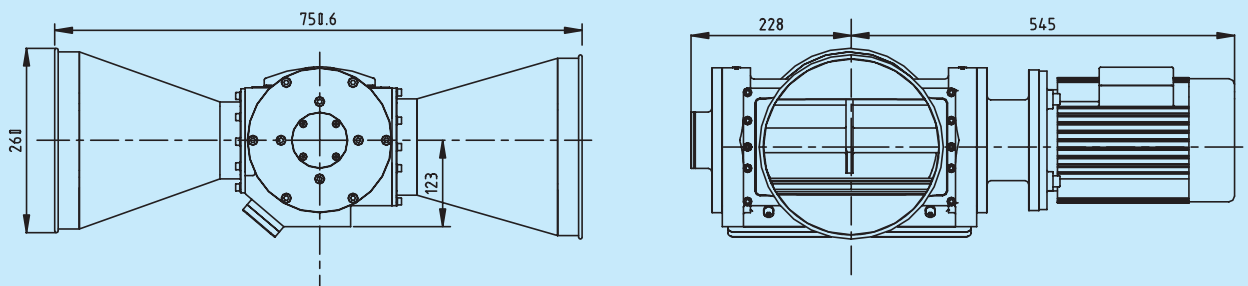
Granulator type GR 80U

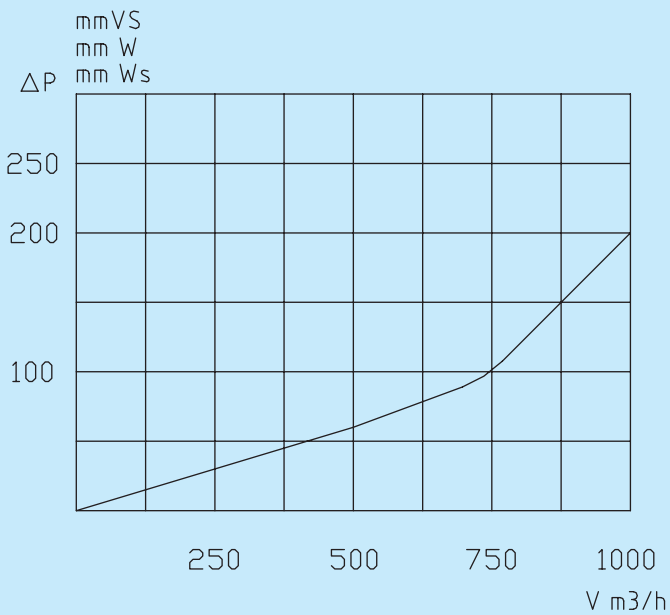


Granulator type GR 140U

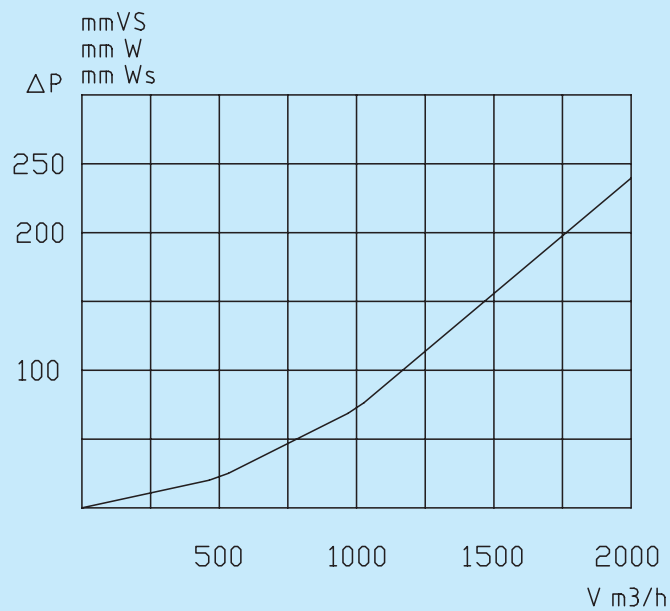


Granulator type GR 250U

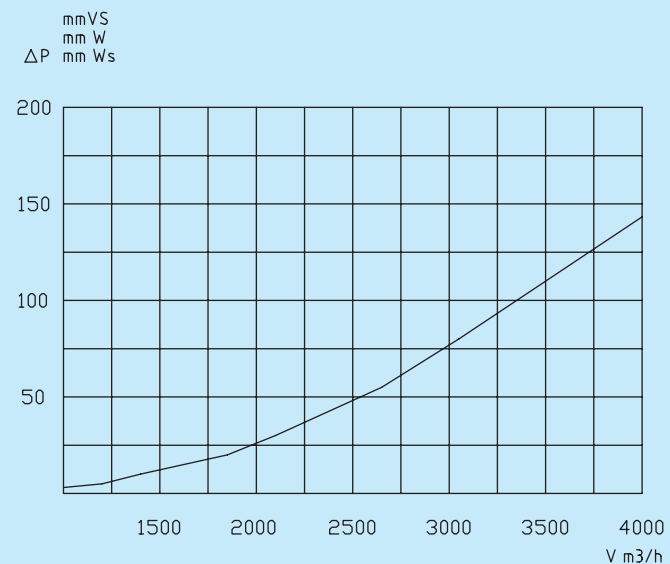




Granulator housing	Cast iron.
Motor	0,55kW type M71
Power	3x400V, 50Hz.
Nom. amperage	1,2A
Fuse	10 Amp.
Rotor	Hard-metal blades.
Piping	ø125 mm.
Transmission	Direct coupling
Weight	20 kg.
Weight w/o motor	12,5 kg.
Surface treatment	Powder lacquering
Noise level	60 dB (A)



Granulator housing	Cast iron.
Motor	0,75 kW type M80
Power	3x400 V, 50 Hz.
Nom. amperage	1,75 A
Fuse	10 A
Rotor	Hard-metal blades.
Piping	ø160 mm.
Transmission	Direct coupling
Weight	32 kg.
Weight w/o motor	22 kg.
Surface treatment	Powder lacquering
Noise level	60 dB (A)



Granulator housing	Cast iron.
Motor	1,5 kW type M90
Power	3x400 V, 50 Hz.
Nom. amperage	4 A
Fuse	10 A
Rotor	Hard-metal blades.
Piping	ø 200-250 mm.
Transmission	Direct coupling
Weight	70 kg.
Weight w/o motor	53 kg.
Surface treatment	Powder lacquering
Noise level	65 dB (A)

GR-80 and GR-140 Combi Edge Trim Granulator...

... effectively solves dust, waste and space problems when handling continuous edge trim.



TECHNICAL INFORMATION:

- The GR Combi models are easy to maintain. Wearing parts are easily replaced in a few minutes.
- Blades are easily adjusted to cut materials from thin gauge films to heavy board.
- Sound level less than 75 dB(a).
- The Granulators are available with equipment for handling adhesive coated substrates.
- Spare parts from spare cutting blades to complete granulators are available from immediate delivery from stock.

GR-80 COMBI:

- Max. trim width per machine: 2 x 15mm
- Air capacity: 900 m³ / hour
- Max. speed: 200 m / min.
- Pipe size: max. ø 125 transfer
- Max. suction distance: 10 m
- Number of connected machines: 2

GR-140 COMBI:

- Max. trim width per machine: 2 x 30mm
- Air capacity: 1600 m³ / hour
- Max. speed: 250 m / min.
- Pipe size: max. ø 160 transfer
- Max. suction distance: 20 m
- Number of connected machines: 3

GR Combi Edge Trim Granulators convert voluminous scrap (paper, plastic and combinations of the same) into a compact mass with a volume of only 5 to 10% of the original.

Lundberg Granulating Systems for Matrix and Matrix Rolls

Due to increased environmental and safety requirements, label manufacturers need equipment that automatically and continuously removes and shreds edge trim and matrix during the production process.

H. Lundberg Maskinfabrik has resolved the waste handling problems of the narrow web sector by developing a proven system for web widths of up to 550 mm.

The system can transport the waste via an exhaust system to a central outdoor container or a smaller indoor collecting unit.

The maximum speed of the machine depends on the size of the ventilator fan. But the standard solution can handle 150 m/min.

Maximum material weight: 600 g/m²



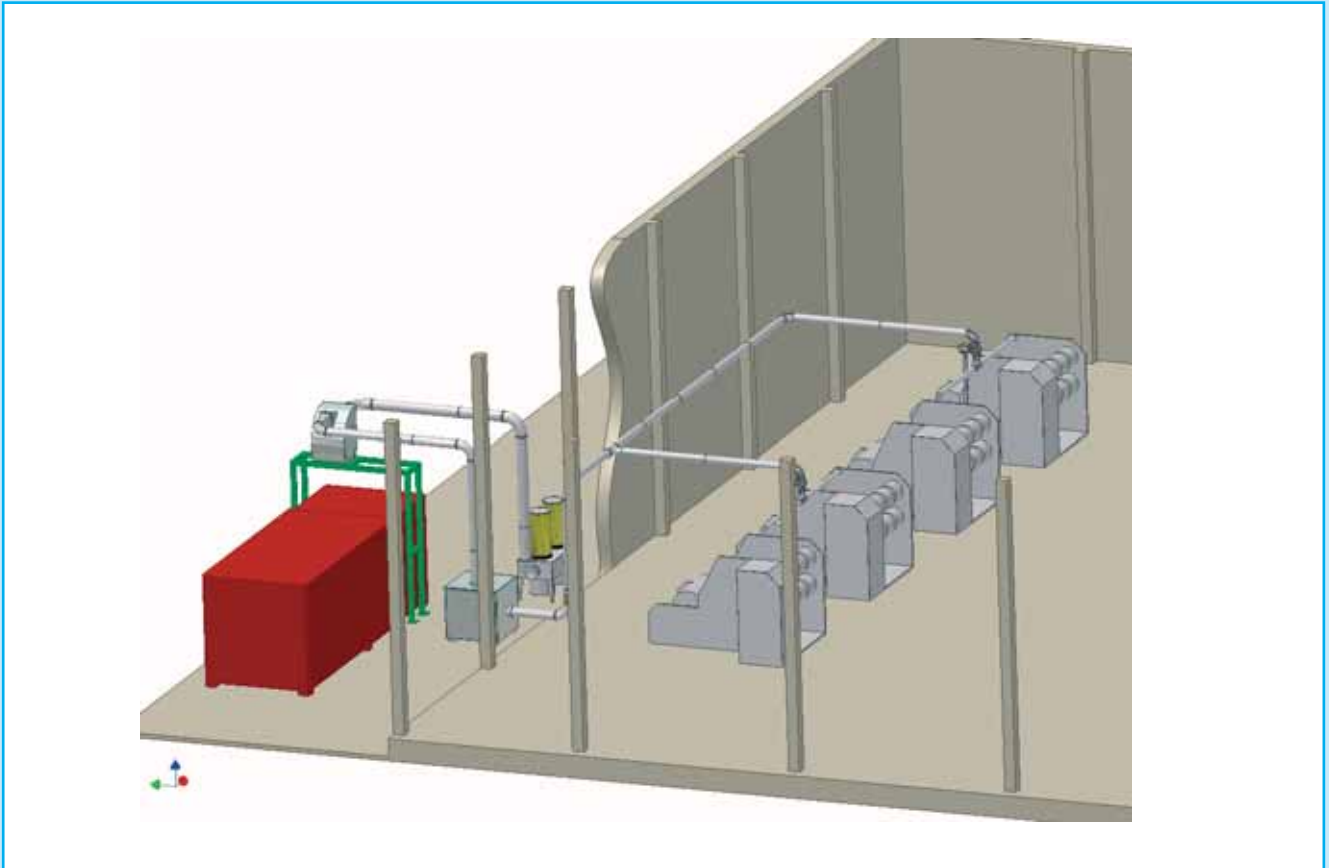
GR140MS Matrix connected to a fully automatic printing machine.



GR140MS Matrix connected to a machine with webs up to 410 mm wide.

ADVANTAGES:

- Continuous operation of the label printing machine, i.e., no down time for removing matrix rolls.
- The matrix is pulled off at constant tension.
- Experience shows that the machine speed can be increased.
- Improved, safer working environment: eliminates lifting of heavy matrix rolls from machine.
- Granulates waste into small pieces which are easy to transport and burn.
- Clean working environment.
- No accumulation of matrix rolls near production machines.



Example of system layout for extraction and granulation of Edge Trim from Slitting machines.

LUNDBERG MASKINFABRIK ApS, founded in 1946, is THE ALL-ROUND PARTNER OF INDUSTRY. For more than 25 years the development and manufacture of edge trim granulating systems for adhesive coated paper and plastic film have been an integral part of our company's work. With this long experience the Granulator division of the company is working closely with our clients to produce engineered solutions to solve their trim removal and handling problems.

H. LUNDBERG MASKINFABRIK APS

Brudelysvej 24A · P.o. Box 10 · DK-2880 Bagsværd · Denmark · Tel. +45 44 98 35 85 · Fax +45 44 44 21 05
E-mail: mail@lundbergmaskinfabrik.dk · www.lundbergmaskinfabrik.dk